

THE MARLBOROUGH
THEATRE

FRINGE PROGRAMME

May 2013



drinkin
brighton
.co.uk

BRIGHTON FRINGE.
PINKFRINGE

Tiger



WELCOME

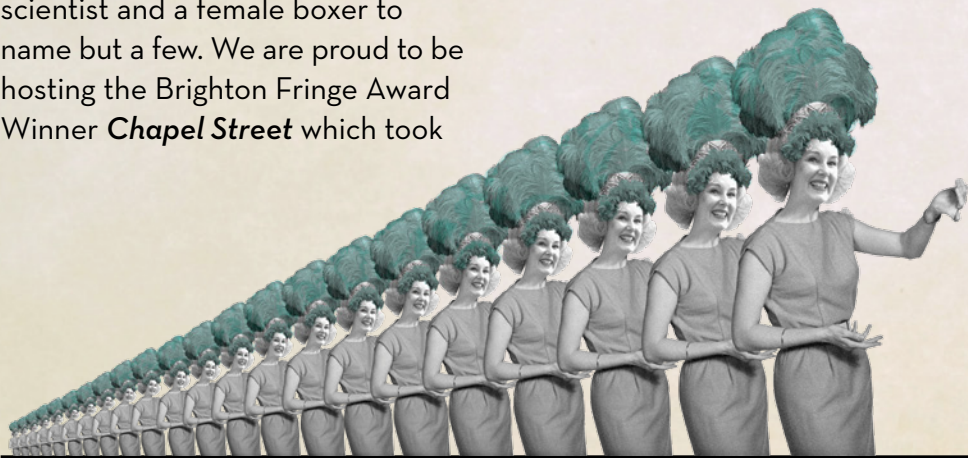
Team Marlborough are back in 2013 delivering our fifth consecutive Brighton Fringe program together, and boy have we got some juicy stories to whet your appetite this year.

We are celebrating in true Marlborough Theatre style, with a kaleidoscope of acts including a mind-bending illusionist, a **Coin-Operated Girl**, a history altering scientist and a female boxer to name but a few. We are proud to be hosting the Brighton Fringe Award Winner **Chapel Street** which took

Edinburgh by storm in 2012 as well as stars of the future like *Sleeping Trees* and *Mace & Burton*.

Head on down to The Marlborough Theatre, we'll treat you like Hollywood royalty.

**David Sheppard &
Tarik Elmoutawakil**
The Marlborough Theatre Team



CONTENTS

THEATRE	6
COMEDY	12
CABARET	13
MUSIC	14

PROUDLY SUPPORTED BY



== HOW TO BOOK ==

You can buy tickets for all Marlborough Theatre Fringe events in advance from:

www.brightonfringe.org
or by calling the Fringe box office on: **01273 91 72 72**

Furthermore, you can now pop into the Brighton Fringe Box Office (formerly Past Times, 54 North Street, Brighton BN1 1RH) to purchase tickets for any Brighton

Fringe show. Open throughout April and May, 7 days a week, it's the convenient and easy way to purchase those much sought after tickets!

If available, a limited number of tickets for events will be on sale at The Marlborough Theatre's in-house box office 30 minutes before show time.

To avoid any disappointment we recommend that you book in advance.

== HOW TO FIND US ==

The Marlborough Theatre
4 Princes Street, Brighton, BN2 1RD

www.marlbroughtheatre.org.uk

✉ info@marlbroughtheatre.org.uk

🐦 @marlytheatre

📍 Marlborough Pub & Theatre



FRINGE DRINKS DEAL!

The lovely folks downstairs in the Marlborough Pub are offering Marlborough Theatre ticket holders a **20% discount** on

selected drinks throughout the Fringe. So we encourage you to stick around and make yourselves comfortable!

PINK FRINGE


Continuing with our mission to bring the freshest and fruitiest queer shows all year round, Pink Fringe is gearing up for our special program of events for Brighton Fringe.

2012 was a big year for Pink Fringe.


We were commissioned by Brighton & Hove Council to produce a plethora of theatrical events in and around Brighton Pride, working with artists such as La Gateau Chocolat, Boogaloo Stu and The LipSinkers. We stepped out for the Pink Fringe Picnic and took a first step into Brighton Dome with our cabaret theatre mash-up *Altered Egos*. So if last year was massive, this year we are leaving orbit! With large scale events in the pipeline as part of this year's Pride, Pink Fringe will soon be visible from space!


Back to Brighton Fringe, we have the return of Bette Bourne & Paul Shaw, our favourite anarchic drag queens, who are

doing two special performances of *A Right Pair*. Paul will also be performing with musician Nicholas Bloomfield in Neil Bartlett's *Night After Night*, last performed at the Royal Court - it's going to be dead special. We have storytelling and theatre galore from acclaimed artists VG Lee (*Lady of The Wild West Hill!*) and Nick Field (*Adventure/MisAdventure*). Pink Fringe is taking on an international flavour this year with the steamy *Between* from South Africa; plus Son Ofa Tutu bringing Nigerian flair with Mzz Kimberley in *Sister Acts* and finally, from sunny Scotland the talented Mark Kydd premiering *I Look: I Divine*.

All Pink Fringe shows have a  by them and we encourage you all to check out these sensational, unique artists.

www.pinkfringe.org.uk

 @pinkfringeuk

 Pink Fringe



BOOK TICKETS

SUPPORT THE MARLBOROUGH THEATRE

The Marlborough Theatre is a Community Interest Company and we receive no regular funding to maintain our extremely old building (c.1794 to be precise). We support artists all year round giving very low cost rehearsal space, producing advice and marketing assistance, allowing them to develop new work and get it seen by you!

Times are tough in the arts, but we believe in the power of the people! Last year your help allowed us to invest in much needed air conditioning units. This year our aim is to raise at least £750 to upgrade our lighting board which was made in the mid 1990s and has seen far better days.

We have created a pledge mural in The Marlborough Theatre to record the names of wonderful donors and where everyone can see what a bunch of art supporting legends you are!

Pledge £25 or more...
and we will give you an entry on the pledge wall.

Pledge £50 or more...
and we will give you two tickets for a Marlborough show in 2013 plus we will give you an entry on the pledge mural.

Pledge £100 or more...
and we will give you two tickets for a Marlborough show in 2013, a Hendricks gin served in a china teacup on arrival and an entry on the pledge mural.

Pledge £250 or more...
and we will offer you two free tickets for a Marlborough show in 2013, a film screening of a film of your choice for up to 30 people, a Hendricks gin on arrival and an entry on the pledge mural.

Pledge £500 or more...
and we will give you a private party at the Marlborough Theatre for up to 50 guests, two free tickets for a Marlborough show in 2013, a Hendricks gin on arrival and an entry on the pledge mural.



You can support The Marlborough Theatre by:

- visiting www.pleasefund.us and searching for 'Marlborough Theatre'.
- writing a cheque made payable to 'Marlborough Productions' and sending it to: The Marlborough, 4 Princes Street, Brighton, BN2 1RD.
- simply dropping some change into our collection box, at the theatre (where, if you like your donation will be recorded) when you come and see a cracking show.

PleaseFund.Uk

BOOK TICKETS

THEATRE



ADVENTURE/ MISADVENTURE

FIELDIMP
WWW.NICKFIELDPOETIC.CO.UK

Thurs 9th May 7.45pm
Fri 10th May 7.45pm
Sat 11th May 7.45pm
Sun 12th May 7.45pm
(1 hour)

Nick Field has chased geishas, discoed with monks and travelled to the ends of the earth, all in pursuit of a freedom that constantly seems - quite literally - over the next horizon.

A trip of a lifetime told through a megamix of theatre, rollerskating and a dash of surrealism. Accompanied by a live score of pop classics performed on the harp.

Co-produced by Ovalhouse, with support from Pink Fringe.

Tickets: £8.00/£6.00 concessions



A RIGHT PAIR

BETTE BOURNE & PAUL SHAW
WWW.PINKFRINGE.ORG.UK

Fri 26th April 7.30pm
Sat 27th April 7.30pm
(1 hour)

This unique partnership have been together offstage and on since the 1970s. Witness a whistle-stop tour of a life together exploring, favourite scenes, obscure gems and other totally new ones.

Join Join Bette and Paul for the triumphs and despair, the glittering high heel moments and the down at heel moments of what it meant to be - A Right Pair...

Tickets: £10.00/£9.00 concessions



ALBERT'S BOY

FIGHT AND HOPE
WWW.FIGHTANDHOPE.WEEBLY.COM

Sat 18th May 4.00pm
Sun 19th May 4.00pm
Sat 25th May 4.00pm
Sun 26th May 4.00pm
Mon 27th May 4.00pm
(1 hour 20 mins)

It's 1953 and Albert Einstein is slowly driving himself insane as he struggles to solve the unanswerable question: "Did I do the right thing?"

A reunion with a friend soon becomes an explosive collision of opposing beliefs on the subject of evil, the winning of wars, and the construction of the world's first weapon of mass destruction - the atomic bomb.

Tickets: £8.00/£6.00 concessions

BOOK TICKETS




THEATRE



BETWEEN

FOURWORD PRODUCTIONS
WWW.FOURWORD.CO.ZA

Thurs 23rd May 9.00pm
Fri 24th May 9.00pm
Sat 25th May 9.00pm
Sun 26th May 9.00pm
Mon 27th May 9.00pm
(1 hour) 

Lost somewhere between love and lust; a man, a boy, a couple, a teacher and his student. Three separate, yet suggestively interlinked stories explore how love can transcend sexual boundaries. Nominated for Best Writing and Best Acting at Dublin Gay Theatre Festival 2012

"Between is very engaging, fast paced and SEXY... theatre that explores aspects of male sexuality rarely seen so honestly."

Tickets: £8.50/£6.50 concessions



BITCH BOXER

SNUFF BOX THEATRE &
RICHARD JORDAN PRODUCTIONS
WWW.SNUFFBOXTHEATRE.CO.UK

Sat 4th May 7.30pm
Sun 5th May 7.30pm
Mon 6th May 7.30pm
Sat 25th May 7.30pm
Sun 26th May 7.30pm
Mon 27th May 7.30pm
(1 hour)

As one young prospect trains for the fight of her life, she is left winded by two life-changing events. In a man's world, can a fighter let her guard down for love and prove she is worth the title?

Snuff Box invites you ringside for an adrenaline-fuelled, no-holds-barred one-woman show unafraid to document the blood, the sweat... and all the tears.

**** The Times & The Telegraph

Tickets: £10.50/£8.50 concessions



CHAPEL STREET BY LUKE BARNES

SCRAWL & RICHARD JORDAN PRODUCTIONS
WWW.SCRAWL-ONLINE.COM

Sat 4th May 6.00pm
Sun 5th May 6.00pm
Mon 6th May 6.00pm
Sat 25th May 6.00pm
Sun 26th May 6.00pm
Mon 27th May 6.00pm
(1 hour)

*"Lets live tonight like
its our last"*

Hilarious, heartbreaking, and drenched in booze, Chapel Street brings you a night of carnage in the lives of Kirsty and Joe. Brought to you by award-winning company Scrawl and one of the UK's most exciting new writers - Luke Barnes. Winner of the Brighton Fringe Award.

"A Disco Pigs for a pro-plus generation" Matt Trueman

**** The Independent

Tickets: £8.50/£6.50 concessions



BOOK TICKETS

THEATRE



FORWARDS AND BACKWARDS

SQUARE PEG THEATRE
WWW.SQUAREPEGTHEATRE.CO.UK

Fri 17th May 6.00pm
Sat 18th May 6.00pm
Sun 19th May 6.00pm
(1 hour)

After a chance encounter two lives are changed forever in this emotional and fast-paced story of fate, sacrifice and love. Told in fragments, the story is woven around Square Peg's unique physical style. Moving forwards and backwards in time, the underlying tragedy of this broken love story is slowly revealed.


Winner of Best Actress at the Buxton Fringe Festival, 2012.

Tickets: £8.00/£6.00 concessions



I LOOK: I DIVINE

PRESENTED BY DERMOT McLAUGHLIN
WWW.DERMOTMCLAUGHLIN.COM

Tues 21st May 7.30pm
Wed 22nd May 7.30pm
Thurs 23rd May 7.30pm
Fri 24th May 7.30pm
(1 hour) 

"Once there were two brothers... They were not twins. Although very different, the brothers had one thing in common - as the younger would discover."

Mark Kydd, in his semi-autobiographical solo show, tells an old tale from a unique and intriguing perspective. Created and performed by Mark Kydd. Produced by Dermot McLaughlin.

Tickets: £10.00/£8.00 concessions



JEWEL

CLAUDIA JEFFERIES
WWW.JEWELSGONNABEUPSET.BLOGSPOT.CO.UK

Thurs 30th May 7.30pm
Fri 31st May 6.00pm
Sat 1st June 6.00pm
Sun 2nd June 6.00pm
(1 hour)

Jewel is entering a beauty pageant. If she doesn't win, she's gonna be upset...

Jewel is a grotesque one-woman show, inspired by the absurdities of high-glitz beauty pageant culture in the U.S. It follows three generations of the same family as they vigorously compete for the Ultimate Grand Supreme Title, with occasional input from a 5'7" prawn.

Tickets: £7.00/£5.00 concessions



BOOK TICKETS

THEATRE



LADY OF THE WILD WEST HILL!

VG LEE
WWW.VGLEE.CO.UK

Fri 17th May 7.45pm
Sat 18th May 7.45pm
Sun 19th May 7.45pm
(1 hour)

Jean Bushell and her friends are getting older but still hope for something more from their lives. Malcolm, Jean's octogenarian neighbour wants a special someone and some guppies. Karen wants a dance partner, her mother wants a knitting pattern and straight Stella would like to be sexually rampant. But what or who does Jean hope for?

Tickets: £8.50/£6.50 concessions



NEIL BARTLETT'S NIGHT AFTER NIGHT

PERFORMED BY PAUL SHAW
& NICHOLAS BLOOMFIELD

Fri 31st May 7.45pm
Sat 1st June 7.45pm
(1 hour)

This classic Neil Bartlett/Nicholas Bloomfield music drama explores a shadow world of longing at once familiar and alien.

The year is 1958. The playwright's father and mother arrange to meet at a theatre in the West End of London to celebrate the playwright's conception. They encounter a host of characters whose lives are linked to that of their unborn son in ways they could never imagine.

Tickets: £10.00/£9.00 concessions



PYGMALION

THE BAREFOOT PLAYERS
WWW.BAREFOOTPLAYERS.CO.UK

Thurs 6th June 7.30pm
Fri 7th June 7.30pm
Sat 8th June 2.30pm
Sat 8th June 7.30pm
(2 hours 30 mins)

Henry Higgins, professor of phonetics and speech therapist to the stars, makes a bet that he can pass off working-class Eliza Doolittle as a minor royal. George Bernard Shaw's most popular play is re-imagined in the image-conscious modern world of fashion and celebrity. A fast-paced satire of society, snobbery and appearance over substance.

Tickets: £8.50/£6.50 concessions



THEATRE



SHELF LIFE: MODERN HOME MANAGEMENT

KATIE RICHARDSON &
LOTTA QUIZEEN PRESENT
WWW.LOTTAQUIZEEN.BIZ

Thurs 9th May 6.00pm
Fri 10th May 6.00pm
Sat 11th May 6.00pm
Sun 12th May 6.00pm
(1 hour)

Learn how to make the perfect dessert, create the consummate canapé and become a master of sheet-folding! Mrs Lotta Quizeen uses the rituals, responsibilities and realities of domesticity (traditionally dismissed as 'women's work') to entertain, educate and amuse you.

A rich but easily digested diet of non-gender-specific domestic tips and practical advice for the 21st century.

Tickets: £7.00/£6.00 concessions



TALES OF THE TOMBOLA

BOX TRACY/THEATRE DANCE COMPANY
BOXTRACYTHEATREDANCECOMPANY.CO.UK

Sat 4th May 4.00pm
Sun 5th May 4.00pm
Mon 6th May 4.00pm
(1 hour)

Over a bottle of wine (or four) with one sprawled in the bath and the other perched on the loo, yet another story has been shared, weaving thicker the web of friendship between Nixx and Val. The pair have built a unique relationship, *Tales Of The Tombola* shares with you the tragic, hilarious, and crude moments that brought them together.

Tickets: £8.50/£6.50 concessions



THE ALTITUDE BROTHERS

SNUFF BOX THEATRE
WWW.SNUFFBOXTHEATRE.CO.UK

Sat 6th May 9.00pm
Tues 28th May 7.30pm
(1 hour)

April 23rd, 1967. The Space Race is almost over. The USSR has all but lost. Soyuz 1, piloted by Vladimir Komarov is the USSR's last-ditch attempt to stay in the running. Snuff Box Theatre invites you to let four wannabe cosmonauts transport you to a time where the very idea of a man in space boggled the minds of millions.

Tickets: £8.50/£6.50 concessions



THEATRE



THE IDEALIST

ODD STUMBLE
WWW.ODDSTUMBLE.ORG

Sat 4th May 9.00pm
Sun 5th May 9.00pm
(1 hour)

Based on true events, an absurdist play about dictatorship, oppression and the truth about dolphins... Antti Penttinen, a Finnish idealist, sets off for the big city to pursue his dream of changing the world through song.

The Idealist explores the revolutionary potential of the modern world by looking at the past and showing us how history repeats itself.

Tickets: £8.00/£6.00 concessions



THE SECRET GARDEN

FIGHT OR FLIGHT PRODUCTIONS
WWW.FIGHTORFLIGHTPRODUCTIONS.CO.UK

Tues 14th May 7.30pm
Wed 15th May 7.30pm
Thurs 16th May 7.30pm
(1 hour)

A lone manor stranded on the moors, a son banished from sight, an entire world locked away by a haunted man. A small girl's soil-stained hands clutch at the key.

Fight or Flight's dark adaptation of Hodgson Burnett's work explores the passion of adult grief as it seeps into children's play.

Tickets: £8.00/£6.00 concessions



THE SLEEPING TREES ODYSSEY

SLEEPING TREES
WWW.SLEEPINGTREETHEATRE.CO.UK

Thurs 2nd May 9.15pm
Fri 3rd May 9.15pm
(1 hour)

This year Sleeping Trees try their hand at remembering Homer's Book Of Odyssey, using mime and nostalgia in lieu of props, sound or scenery. *The Sleeping Trees Odyssey* follows Odysseus on his epic (or 50 minute) journey back from the war at Troy. But this is no walk in the park, unless that park contains a massive cyclops.

Tickets: £8.00/£6.00 concessions



COMEDY



ROM COM CON

MACE AND BURTON
WWW.MACEANDBURTON.COM

Sat 11th May 9.15pm
Sun 12th May 9.15pm
(1 hour)

Lizzy Mace and Juliette Burton road-tested all the ways guys and girls meet in romantic comedies. Did they find true love? Or just one big con? Enjoy this utterly truthful, real-life romp through the rom coms that earned Mace and Burton an Argus Angel Award at Brighton 2012, 4-star reviews and sell-out runs at the Edinburgh Fringe two years running.

Tickets: £8.50/£7.50 concessions



TERRY ARKWRIGHT: THE DARK HELMET SPEAKS

LES HULL

Tues 7th May 7.30pm
Wed 8th May 7.30pm
(40 mins)

Superhero? Vigilante? Decorator? Terry Arkwright is a one-man army keeping the mean streets of Sussex safe for us all. In a rare break from protecting our liberty he records a radio play style podcast discussing the perils of crime fighting, care-taking and trying to do right by his niece Sandi... Les Hull's comic creation returns with further shambolic exploits.

Tickets: £8.50/£6.50 concessions



THE COIN- OPERATED GIRL

MIRANDA KANE
WWW.COINOPERATEDGIRL.CO.UK

Thurs 16th May 9.15pm
Fri 17th May 9.15pm
Sat 18th May 9.15pm
(1 hour)

A Sex-Worker's Real-Life Revelations of Frivolous Fornications! In this tell-all comedy, Kane exposes the truth about life as a sex-worker with stories of hilarious, heart-warming and often bizarre moments in a unique career. Even if it's not your first time with a prostitute, it'll be the funniest.

*"Candid & charmingly told
tale of life as an escort...
Stay for the Q&A!"*

Tickets: £8.00/£7.00 concessions



BOOK TICKETS

CABARET



WHEN I GROW UP

MACE & BURTON PRESENTS
WWW.MACEANDBURTON.COM

Wed 8th May 9.15pm
Thurs 9th May 9.15pm
Fri 10th May 9.15pm
(1 hour)

Last year, Juliette couldn't find work. As a child she wanted to be many things: ballerina, princess, Muppet... Did she have it right when she was a kid? Did she know her vocation before life got in the way? In this true-life comedy, Juliette goes to extreme lengths to realise her childhood ambitions. Does growing up mean letting go?

Tickets: £8.50/£7.50 concessions



ALL THE MEN WE'VE NEVER SLEPT WITH

SUGAR & VICE/HMD PRODUCTIONS

Fri 31st May 10.45pm
Sat 1st June 10.45pm
(1 hour)

Often the sexiest stories are the ones you don't quite finish. Join the sometimes-sweet, mostly-naughty girls of Sugar & Vice for late night songs and laughter. Courtney's saving herself until marriage and knows that you find that weird. Brydie spent herself some time ago and has been living on sexual credit ever since.

"fun and fantastic"

**** Edfringe Review

Tickets: £8.00/£6.00 concessions



KIKI LOVECHILD'S THE WEATHERMAN

KIKI LOVECHILD PRESENTS
WWW.KIKILOVECHILD.CO.UK

Thurs 30th May 9.15pm
Fri 31st May 9.15pm
Sat 1 June 9.15pm
(1 hour)

Physical comedy, mime and illusion from the clown who makes it rain from his fingertips. Join Kiki as he creates new worlds from his imagination. Feedback from previous performances:

"Kiki never says a word... but his accomplished grasp of stagecraft speaks volumes."

The Londonist

"Inventive, endearing and funny" ThisIsCabaret.com

"Sends the crowd into a wave of laughter" Burlesque Map

Tickets: £7.00/£5.00 concessions




BOOK TICKETS

CABARET MUSIC



SISTER ACTS

SON OFA TUTU & MZZ KIMBERLEY
WWW.FACEBOOK.COM/SON.TUTU

Thurs 2nd May 7.30pm
Sat 4th May 10.30pm
Sun 5th May 10.30pm
(1 hour) 

Sister Acts, the record breaking box-office smash of the RVT's 2012 Hot August Fringe, is a journey into the various acts of sisterhood, the bonds that bring sisters together and the cogs that tear them apart. A tale of Affection, Deception and Protection that will make you laugh till it hurts and sometimes, wanna kill somebody.

Tickets: £8.50/£6.50 concessions



STUPERSTITION

NATIONAL ARTS FESTIVAL & DL PRODUCTIONS
WWW.STUARTLIGHTBODY.CO.ZA

Tue 14th May 9.15pm
Wed 15th May 9.15pm
Fri 17th May 10.30pm
Sat 18th May 10.30pm
Thurs 23th May 10.30pm
Fri 24th May 10.30pm
Sat 25th May 10.30pm
(1 hour)

An entertaining and occasionally controversial look at superstitious and magical thinking. *Stuperstition* is filled with impossible feats and thought-provoking demonstrations from a multi-award winning South African sleight of hand artist and psychological illusionist.

Stuart Lightbody has made it his life's work to create elegant moments of wonder and astonishment; to engineer experiences of strange and impossible beauty.

Tickets: £8.50/£6.50 concessions



PROFESSOR ELEMENTAL'S ATTIC

PROFESSOR ELEMENTAL
WWW.PROFESSORELEMENTAL.COM

Fri 10th May 10.30pm
Sat 11th May 10.30pm
(1 hour 30mins)

Join Professor Elemental, the award winning Steampunk entertainer and emcee, as he takes you on a journey through his astounding attic. Bear witness to strange tales, puppetry, songs and surprises, as the Professor delves into the world of the weird and wonderful. There has never been a Hip Hop show quite like this.

Tickets: £8.50/£6.50 concessions



BOOK TICKETS

PUNKTURED

BODY PIERCING

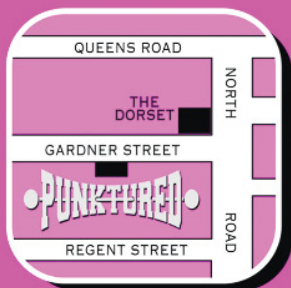
35 GARDNER STREET, BRIGHTON

TELEPHONE: 01273 688144

OPEN MON-SAT

10.30AM-6PM SUN 12PM-5PM

- FRIENDLY, RELAXED ENVIRONMENT
- FREE CONSULTATION, NO OBLIGATION
- MALE AND FEMALE PIERCERS
- MORE THAN 20 YEARS EXPERIENCE
- HUGE RANGE OF FANTASTIC JEWELLERY
- FROM £20 INCLUDING AFTERCARE



WWW.PUNKTURED.CO.UK



CALENDAR

Key: *The* - Theatre *Com* - Comedy *Cab* - Cabaret *Mus* - Music

DATE	TIME	EVENT
Fri 26th April	7.30pm	A Right Pair <i>The p6</i>
Sat 27th April	7.30pm	A Right Pair <i>The p6</i>
Thurs 2nd May	9.15pm	Sister Acts <i>Cab p14</i>
Fri 3rd May	9.15pm	The Sleeping Trees Odyssey <i>The p11</i>
Sat 4th May	4.00pm	Tales Of The Tombola <i>The p10</i>
	6.00pm	Chapel Street <i>The p7</i>
	7.30pm	Bitch Boxer <i>The p7</i>
	9.00pm	The Idealist <i>The p11</i>
	10.30pm	Sister Acts <i>Cab p14</i>
Sun 5th May	4.00pm	Tales Of The Tombola <i>The p10</i>
	6.00pm	Chapel Street <i>The p7</i>
	7.30pm	Bitch Boxer <i>The p7</i>
	9.00pm	The Idealist <i>The p11</i>
	10.30pm	Sister Acts <i>Cab p14</i>
Mon 6th May	4.00pm	Tales Of The Tombola <i>The p10</i>
	6.00pm	Chapel Street <i>The p7</i>
	7.30pm	Bitch Boxer <i>The p7</i>
	9.00pm	The Idealist <i>The p11</i>
	10.30pm	Sister Acts <i>Cab p14</i>
Tues 7th May	7.30pm	Terry Arkwright: The Dark Helmet Speaks <i>Com p12</i>
Wed 8th May	7.30pm	Terry Arkwright: The Dark Helmet Speaks <i>Com p12</i>
	9.15pm	When I Grow Up <i>Com p13</i>
Thurs 9th May	6.00pm	Sheff Life: Modern Home Management <i>The p10</i>
	7.45pm	Adventure/Misadventure <i>The p6</i>
	9.15pm	When I Grow Up <i>Com p13</i>
Fri 10th May	6.00pm	Sheff Life: Modern Home Management <i>The p10</i>
	7.45pm	Adventure/Misadventure <i>The p6</i>
	9.15pm	When I Grow Up <i>Com p13</i>
	10.30pm	Professor Elemental's Attic <i>Mus p14</i>
Sat 11th May	6.00pm	Sheff Life: Modern Home Management <i>The p10</i>
	7.45pm	Adventure/Misadventure <i>The p6</i>
	9.15pm	Rom Com <i>Com p12</i>
	10.30pm	Professor Elemental's Attic <i>Mus p14</i>
Sun 12th May	6.00pm	Sheff Life: Modern Home Management <i>The p10</i>
	7.45pm	Adventure/Misadventure <i>The p6</i>
	9.15pm	Rom Com <i>Com p12</i>
Tue 14th May	7.30pm	The Secret Garden <i>The p11</i>
	9.15pm	Superstition <i>Cab p14</i>
Wed 15th May	7.30pm	The Secret Garden <i>The p11</i>
	9.15pm	Superstition <i>Cab p14</i>
Thurs 16th May	7.30pm	The Secret Garden <i>The p11</i>
	9.15pm	The Coin-Operated Girl <i>Com p12</i>
Fri 17th May	6.00pm	Forwards and Backwards <i>The p8</i>
	7.45pm	Lady of the Wild West Hill! <i>The p9</i>

DATE	TIME	EVENT
Fri 17th May	9.15pm	The Coin-Operated Girl <i>Com p12</i>
	10.30pm	Superstition <i>Cab p14</i>
Sat 18th May	4.00pm	Albert's Boy <i>The p6</i>
	6.00pm	Forwards and Backwards <i>The p8</i>
	7.45pm	Lady of the Wild West Hill! <i>The p9</i>
	9.15pm	The Coin-Operated Girl <i>Com p12</i>
	10.30pm	Superstition <i>Cab p14</i>
Sun 19th May	4.00pm	Albert's Boy <i>The p6</i>
	6.00pm	Forwards and Backwards <i>The p8</i>
	7.45pm	Lady of the Wild West Hill! <i>The p9</i>
Tues 21st May	7.30pm	I Look: I Divine <i>The p8</i>
Wed 22nd May	7.30pm	I Look: I Divine <i>The p8</i>
Thurs 23rd May	7.30pm	I Look: I Divine <i>The p8</i>
	9.00pm	Between <i>The p7</i>
	10.30pm	Superstition <i>Cab p14</i>
Fri 24th May	7.30pm	I Look: I Divine <i>The p8</i>
	9.00pm	Between <i>The p7</i>
	10.30pm	Superstition <i>Cab p14</i>
Sat 25th May	4.00pm	Albert's Boy <i>The p6</i>
	6.00pm	Chapel Street <i>The p7</i>
	7.30pm	Bitch Boxer <i>The p7</i>
	9.00pm	Between <i>The p7</i>
	10.30pm	Superstition <i>Cab p14</i>
Sun 26th May	4.00pm	Albert's Boy <i>The p6</i>
	6.00pm	Chapel Street <i>The p7</i>
	7.30pm	Bitch Boxer <i>The p7</i>
	9.00pm	Between <i>The p7</i>
Mon 27th May	4.00pm	Albert's Boy <i>The p6</i>
	6.00pm	Chapel Street <i>The p7</i>
	7.30pm	Bitch Boxer <i>The p7</i>
	9.00pm	Between <i>The p7</i>
Tues 28th May	7.30pm	The Attitude Brothers <i>The p10</i>
Thurs 30th May	7.30pm	Jewel <i>The p8</i>
Fri 31st May	6.00pm	Jewel <i>The p8</i>
	7.45pm	Night After Night <i>The p6</i>
	10.45pm	All The Men We've Never Slept With <i>Cab p13</i>
Sat 1st June	6.00pm	Jewel <i>The p8</i>
	7.45pm	Night After Night <i>The p6</i>
	10.45pm	All The Men We've Never Slept With <i>Cab p13</i>
Sun 2nd June	6.00pm	Jewel <i>The p8</i>
Thurs 6th June	7.30pm	Pygmalion <i>The p9</i>
Fri 7th June	7.30pm	Pygmalion <i>The p9</i>
Sat 8th June	2.30pm	Pygmalion <i>The p9</i>
	7.30pm	Pygmalion <i>The p9</i>